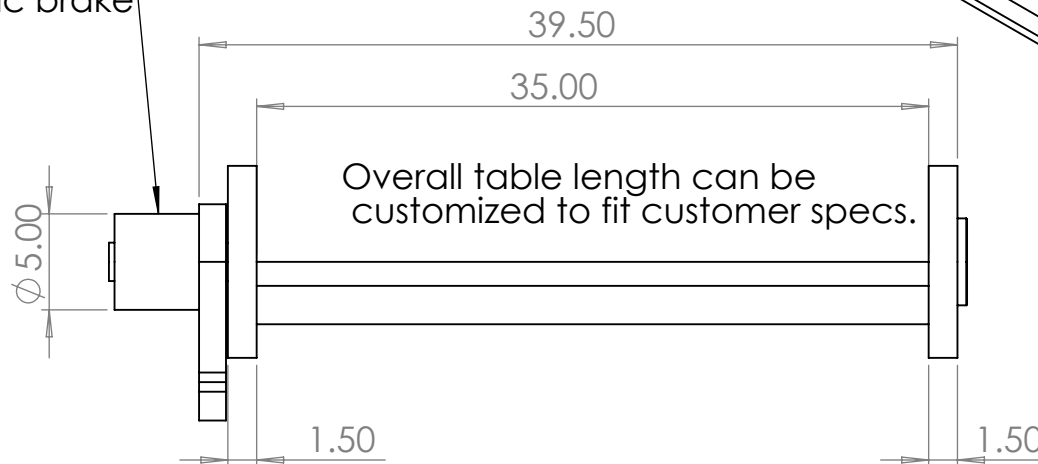
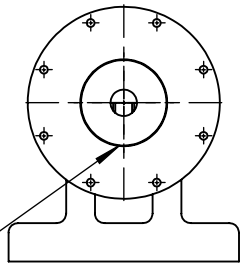


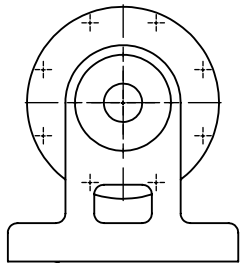
Optional Hydraulic brake



Overall table length can be customized to fit customer specs.

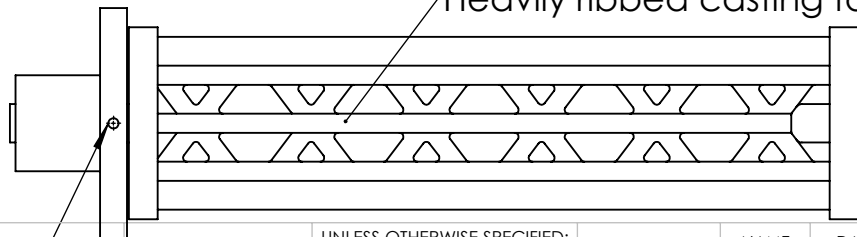


Faceplate dimensions made to match rotary table



Outboard support machined to match customers rotary table centerheight

Heavily ribbed casting for extreme rigidity



Thru hole for mounting to table

**PROPRIETARY AND CONFIDENTIAL**  
THE INFORMATION CONTAINED IN THIS DRAWING IS THE SOLE PROPERTY OF <INSERT COMPANY NAME HERE>. ANY REPRODUCTION IN PART OR AS A WHOLE WITHOUT THE WRITTEN PERMISSION OF <INSERT COMPANY NAME HERE> IS PROHIBITED.

		UNLESS OTHERWISE SPECIFIED:	NAME	DATE
		DIMENSIONS ARE IN INCHES	DRAWN	
		TOLERANCES:	CHECKED	
		FRACTIONAL ±	ENG APPR.	
		ANGULAR: MACH ± BEND ±	MFG APPR.	
		TWO PLACE DECIMAL ±	Q.A.	
		THREE PLACE DECIMAL ±	COMMENTS:	
		INTERPRET GEOMETRIC TOLERANCING PER:		
		MATERIAL		
		FINISH		
NEXT ASSY	USED ON			
APPLICATION		DO NOT SCALE DRAWING		

Stallion 9/35 with brake

TITLE:  
Martin Manufacturing  
602 Main St  
Elsmere, KY 41018

SIZE	DWG. NO.	REV
<b>Stallion 9x35 pdf</b>		

SCALE: 1:10	WEIGHT:	SHEET 1 OF 1
-------------	---------	--------------