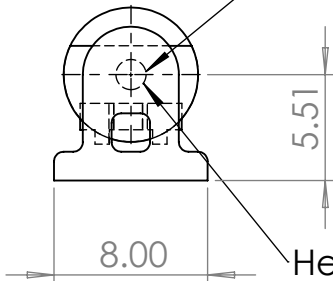
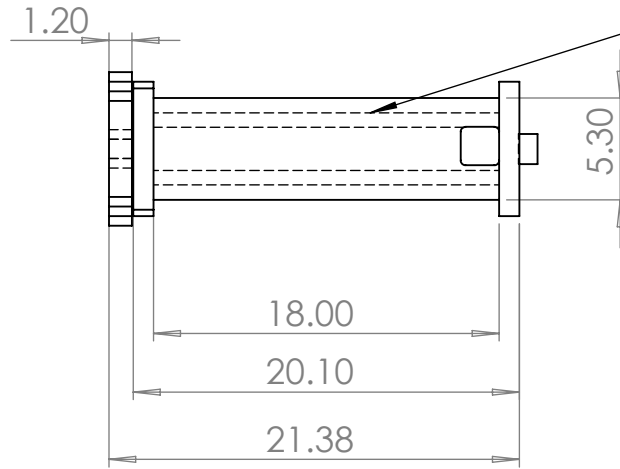


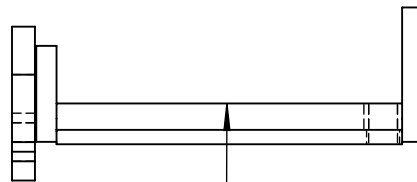
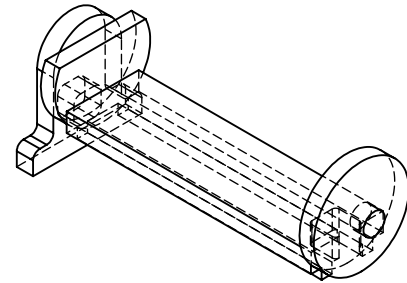
Centerheight made specific to Customers rotary table



Heavy duty 2.0" id bronze bearing with grease grooves and zirk fitting



Heavy bracing to ensure vibration free cuts



Faceplate mounting and spud diameter made specific to customer rotary table.

Deck can be machined to accept vises, chucks, or fixture plates by us or customer

**PROPRIETARY AND CONFIDENTIAL**  
 THE INFORMATION CONTAINED IN THIS DRAWING IS THE SOLE PROPERTY OF <INSERT COMPANY NAME HERE>. ANY REPRODUCTION IN PART OR AS A WHOLE WITHOUT THE WRITTEN PERMISSION OF <INSERT COMPANY NAME HERE> IS PROHIBITED.

		UNLESS OTHERWISE SPECIFIED:	NAME	DATE
		DIMENSIONS ARE IN INCHES TOLERANCES: FRACTIONAL ± ANGULAR: MACH ± BEND ± TWO PLACE DECIMAL ± THREE PLACE DECIMAL ±	DRAWN	
		INTERPRET GEOMETRIC TOLERANCING PER:	CHECKED	
		MATERIAL <b>Class 35 CI</b>	ENG APPR.	
		FINISH	MFG APPR.	
NEXT ASSY	USED ON		Q.A.	
APPLICATION		DO NOT SCALE DRAWING	COMMENTS:	

Stallion 5 x 18		
TITLE: Martin Trunnion Tables 602 Main St Elsmere, Ky 41018		
SIZE	DWG. NO.	REV
<b>A</b>	<b>ST 5 x 18</b>	
SCALE: 1:10	WEIGHT:	SHEET 1 OF 1