

External dimensions will be different according to the type of the servo motors. Dimensions with FANUC motor or with NIKKEN α 21 controller (α 21:) are shown. Please contact with us for CAD data (2D:DXF, 3D:PARASOLID).

CNC105, CNCZ105

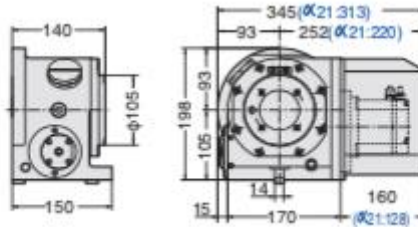


Photo shows a rotary table with α 21 controller.

Powerful Brake
Brake Torque : 205Nm



Air purge function is provided inside the motor cover as standard.

CNC180, CNCZ180

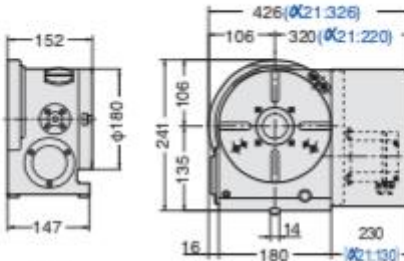
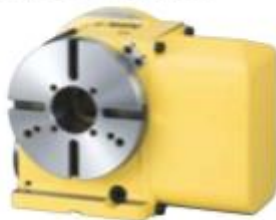
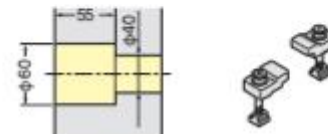


Photo shows a rotary table with α 21 controller.

Powerful Brake
Brake Torque : 303Nm



Air purge function is provided inside the motor cover as standard.

CNC202, CNCZ202

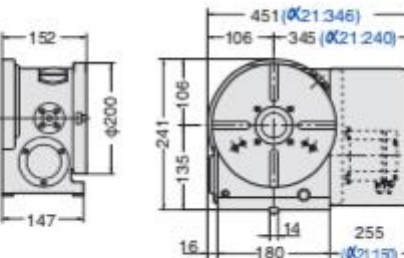
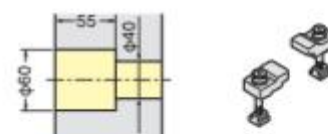


Photo shows a rotary table with α 21 controller.

Powerful Brake
Brake Torque : 303Nm



Air purge function is provided inside the motor cover as standard.

- ★ For accuracy standard, refer to P.51, 52
- ★ For fitting metal and stepped guide piece, refer to P.22

- ★ For scroll chuck, tailstock and other optional accessories, refer to P.49, 50
- ★ α series attachment can be attached for all tables, refer to P.46

Counter Balance Cylinder

Counter Balance Cylinder is standardized to solve un-balancing load. JAPAN. PAT

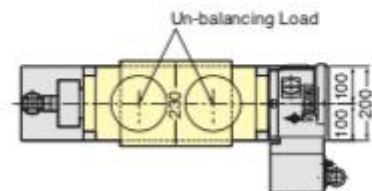
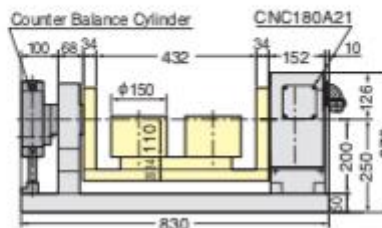
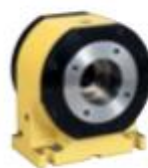
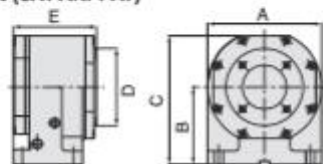


Photo and illustration show the example of the application for un-balancing load.

Small Size Support Table TAT(JAPAN. PAT)



TAT105



Pneumatic ports are 2 x Rc1/8. Solenoid valve and clamp/unclamp confirmation switches are not included.

Code No.	A	B	C	D	E	Clamping System	Brake Torque (N·m)	Weight (kg)
TAT105	155	105	175	105	113	Air	205	16
TAT170	155	135	220	170	138	Air	205	25

- ★ Air pressure is 0.5MPa.
- ★ Double intensifying clamping mechanism is installed on TAT105 & TAT170
- ★ Rotary joint is available for all models, refer to P.54

CST100-105, 135 (w/o brake)

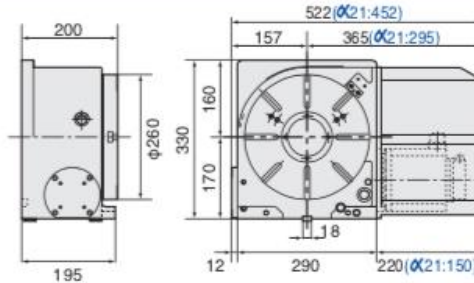
- ★ Please add " - centre height" at the end of Code No. for the support table with different centre height (B). e.g. TAT105-135

CNC260,302,321,401,B350

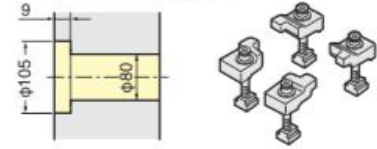


External dimensions will be different according to the type of the servo motors. Dimensions with FANUC motor or with NIKKEN $\alpha 21$ controller ($\alpha 21$) are shown. Please contact with us for CAD data (2D:DXF, 3D:PARASOLID).

CNC260, CNCZ260

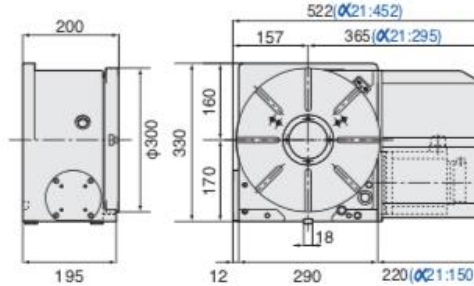
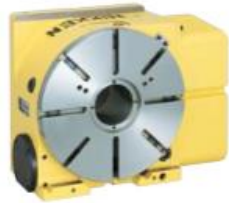


Pneumatic Brake Torque UP
588Nm

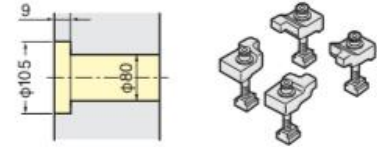


★ For the rotary table with pneumatic brake, air purge function is provided inside the motor cover as standard.

CNC302, CNCZ302

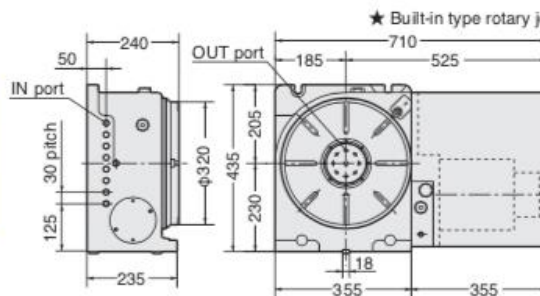


Pneumatic Brake Torque UP
588Nm

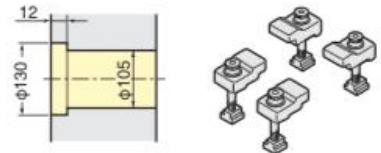


★ For the rotary table with pneumatic brake, air purge function is provided inside the motor cover as standard.

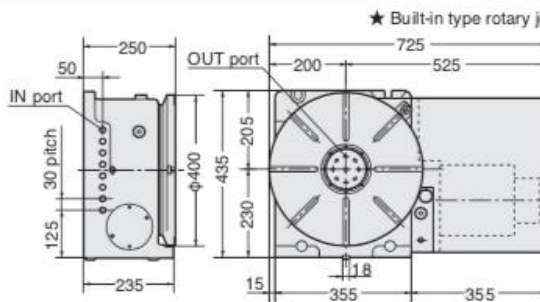
CNC321, CNCZ321



★ Built-in type rotary joint can be mounted on CNC321 & 401, refer P.49



CNC401, CNCZ401



★ Built-in type rotary joint can be mounted on CNC321 & 401, refer P.49

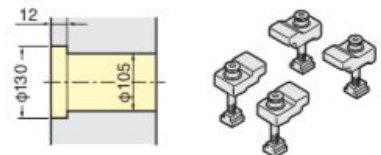
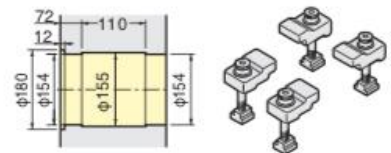
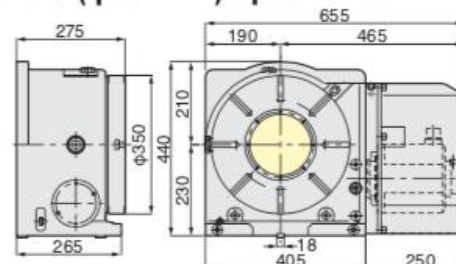


Photo shows with rotary joint (option).

CNCB350 **NEW** Ultra Big Bore ($\phi 154$ mm) Specification available as an option.



★ For accuracy standard, refer P.51, 52

★ For fitting metal and stepped guide piece, refer P.22

★ For scroll chuck, tailstock and other optional accessories, refer P.49, 50

★ For the condition of CNC table which is mounted on CNC special purpose machine, refer P.59, 60