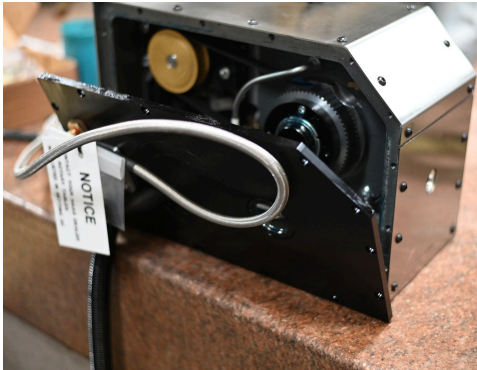


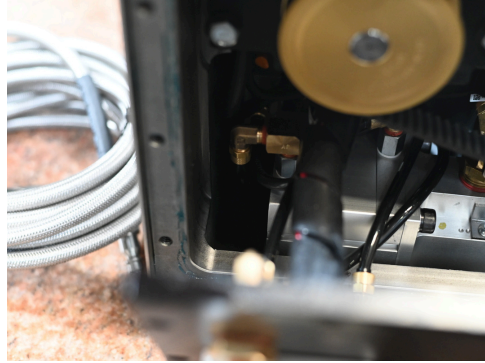
INSTRUCTIONS FOR INSTALLING THE STALLION HYDRAULIC BRAKE

1



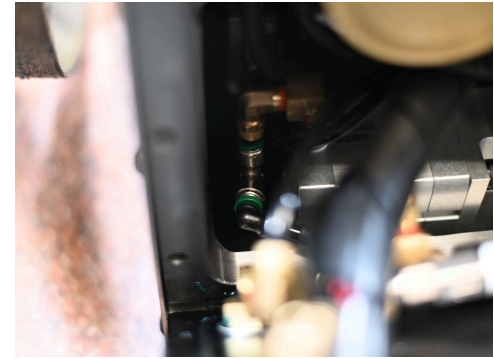
Remove cover

2



Locate 1/4" hose running from PORT 2 on solenoid valve to inside and near top of box running to inside of rotary

3



Cut this hose in half as close to the opening of the box as possible and attach quick disconnect "T" (provided). Drill 3/4" hole in back of cabinet with metal hole saw approximately 2" from end and 3 1/4" from bottom of cabinet

4



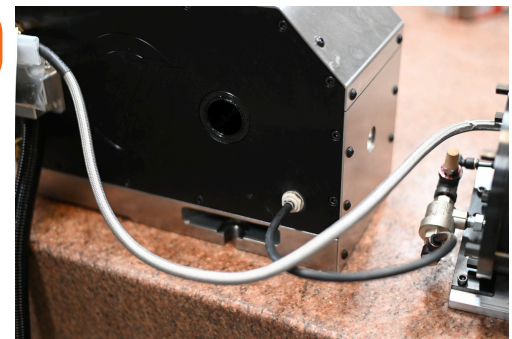
Insert bulkhead fitting (provided). Spread permatex around inside of flange on both sides (permatex provided)

5



Mount pump to back of indexer using (2) cap screws (provided) Connect 1/4" hose from air inlet port side (as shown on back of cylinder)

6



Reinstall cover